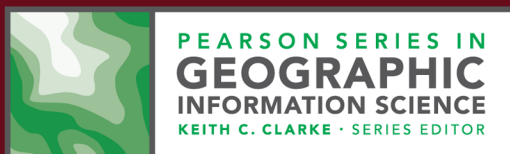
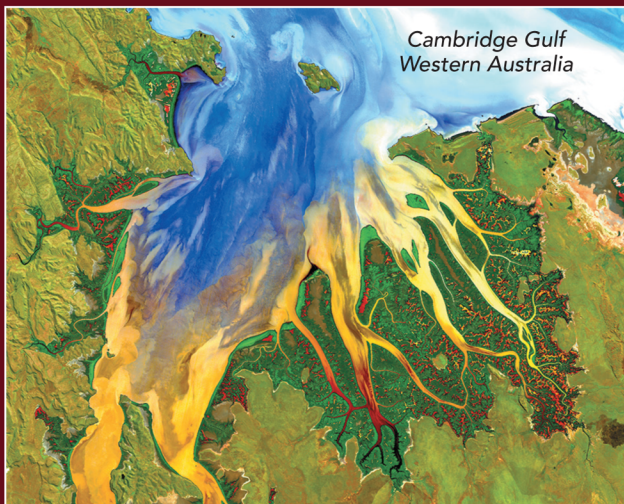


# INTRODUCTORY DIGITAL IMAGE PROCESSING

A Remote Sensing Perspective

4th Edition



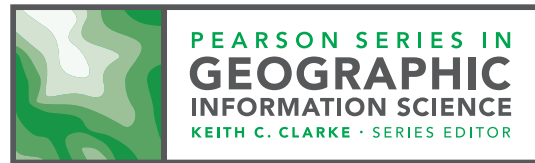
John R. Jensen



# **INTRODUCTORY DIGITAL IMAGE PROCESSING**

## **A Remote Sensing Perspective**





Berlin/Avery, *Fundamentals of Remote Sensing and Airphoto Interpretation*, 5th edition

Clarke, *Getting Started with Geographic Information Systems*, 5th edition

Clarke, *Maps & Web Mapping*

Greene/Pick, *Exploring the Urban Community: A GIS Approach*, 2nd edition

Jensen, *Introductory Digital Image Processing: A Remote Sensing Perspective*, 4th edition

Jensen, *Remote Sensing of the Environment: An Earth Resource Perspective*, 2nd edition

Jensen/Jensen, *Introductory Geographic Information Systems*

Lo/Yeung, *Concepts and Techniques in Geographic Information Systems*, 2nd edition

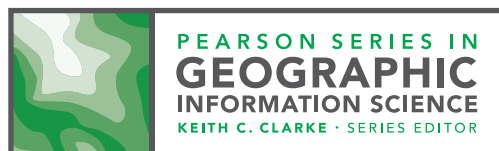
Slocum/McMaster/Kessler/Howard, *Thematic Cartography and Geovisualization*, 3rd edition

# INTRODUCTORY DIGITAL IMAGE PROCESSING

## A Remote Sensing Perspective

**John R. Jensen**

University of South Carolina



Senior Acquisitions Editor: Christian Botting  
 Executive Marketing Manager: Neena Bali  
 Program Manager: Anton Yakovlev  
 Project Manager: Crissy Dudonis  
 Editorial Assistant: Amy DeGenaro  
 Senior Project Manager, Text and Images: Rachel Youdelman  
 Program Management Team Lead: Kristen Flatham  
 Project Management Team Lead: David Zielonka  
 Production Management/Composition: Raghavi Khullar/Cenveo® Publisher Services  
 Design Manager: Marilyn Perry  
 Operations Specialist: Maura Zaldivar-Garcia

Cover Photo Credit: **Landsat 8 artist rendition:** NASA, 2014, "NASA-USGS Landsat 8 Satellite Celebrates First Year of Success," February 11, 2014, NASA Goddard Space Flight Center; <http://www.nasa.gov/content/goddard/nasa-usgs-landsat-8-satellite-celebrates-first-year-of-success/>. **Landsat 8 image of Cambridge Gulf, Northwestern Australia:** U.S. Geological Survey, *Landsat 8 Gallery*; [http://landsat.usgs.gov/gallery\\_view.php?category=nocategory&thesort=picture&id=](http://landsat.usgs.gov/gallery_view.php?category=nocategory&thesort=picture&id=) and, Geoscience Australia; <http://www.ga.gov.au/>. **Landsat 8 image of lower San Francisco Bay, California, USA:** NASA Earth Observatory on May 31, 2013; <http://earthobservatory.nasa.gov/IOTD/view.php?id=81238>.

Credits and acknowledgments for material borrowed or adapted from other sources and reproduced, with permission, in this textbook appear on the pages at the end of the figure and table captions and in the Acknowledgements.

Copyright © 2015 Pearson Education, Inc. All rights reserved. Manufactured in the United States of America. This publication is protected by Copyright, and permission should be obtained from the publisher prior to any prohibited reproduction, storage in a retrieval system, or transmission in any form or by any means, electronic, mechanical, photocopying, recording, or likewise. To obtain permission(s) to use material from this work, please submit a written request to Pearson Education, Inc., Permissions Department, 1900 E. Lake Ave., Glenview, IL 60025. For information regarding permissions, call (847) 486-2635.

Many of the designations used by manufacturers and sellers to distinguish their products are claimed as trademarks. Where those designations appear in this book, and the publisher was aware of a trademark claim, the designations have been printed in initial caps or all caps.

Jensen, John R., 1949-

Introductory digital image processing : a remote sensing perspective / John R. Jensen, University of South Carolina. pages cm. -- (Pearson series in geographic information science)

Includes bibliographical references and index.

ISBN 978-0-13-405816-0

1. Remote sensing. 2. Image processing--Digital techniques. I. Title. II. Title: Digital image processing.

G70.4.J46 2015

006.4'2--dc23

2015007022

1 2 3 4 5 6 7 8 9 10—V082—15 14 13 12 11



# Brief Contents

<b>Chapter 1</b>	<b>Remote Sensing and Digital Image Processing</b>	<b>1</b>
<b>Chapter 2</b>	<b>Remote Sensing Data Collection</b>	<b>37</b>
<b>Chapter 3</b>	<b>Digital Image Processing Hardware and Software</b>	<b>111</b>
<b>Chapter 4</b>	<b>Image Quality Assessment and Statistical Evaluation</b>	<b>131</b>
<b>Chapter 5</b>	<b>Display Alternatives and Scientific Visualization</b>	<b>153</b>
<b>Chapter 6</b>	<b>Electromagnetic Radiation Principles and Radiometric Correction</b>	<b>185</b>
<b>Chapter 7</b>	<b>Geometric Correction</b>	<b>235</b>
<b>Chapter 8</b>	<b>Image Enhancement</b>	<b>273</b>
<b>Chapter 9</b>	<b>Thematic Information Extraction: Pattern Recognition</b>	<b>361</b>
<b>Chapter 10</b>	<b>Information Extraction Using Artificial Intelligence</b>	<b>429</b>
<b>Chapter 11</b>	<b>Information Extraction Using Imaging Spectroscopy</b>	<b>459</b>
<b>Chapter 12</b>	<b>Change Detection</b>	<b>501</b>
<b>Chapter 13</b>	<b>Remote Sensing–Derived Thematic Map Accuracy Assessment</b>	<b>557</b>
<b>Appendix</b>	<b>Sources of Imagery &amp; Other Geospatial Information</b>	<b>583</b>
<b>Index</b>		<b>603</b>

# Contents

Preface XX

About the Author XXV

## 1 Remote Sensing and Digital Image Processing



Overview 1

*In Situ* Data Collection 1

Remote Sensing Data Collection 3

**Observations About Remote Sensing 4**

Remote Sensing: Art and/or Science? 4

Information About an Object or Area 7

The Instrument (Sensor) 7

Distance: How Far Is Remote? 7

**Remote Sensing Advantages and Limitations 7**

Advantages 7

Limitations 8

**The Remote Sensing Process 8**

**Statement of the Problem 8**

**Identification of *In situ* and Remote Sensing Data Requirements 9**

Collateral Data Requirements 10

Remote Sensing Data Requirements 10

**Remote Sensing Data Collection 10**

Spectral Information and Resolution 12

Spatial Information and Resolution 13

Temporal Information and Resolution 16

Radiometric Information and Resolution 17

Polarization Information 17

Angular Information 18

Suborbital (Airborne) Remote Sensing Systems 20

Satellite Remote Sensing Systems 20

**Remote Sensing Data Analysis 23**

Analog (Visual) Image Processing 24

Digital Image Processing 24

**Information Presentation 27**

**Earth Observation Economics 28**

**Remote Sensing/Digital Image Processing Careers in the Public and Private Sectors 29**

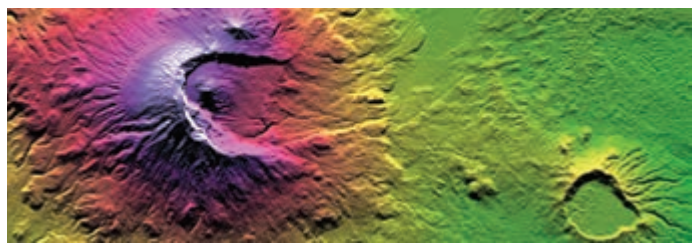
**Earth Resource Analysis Perspective 30**

**Book Organization 32**

**References 32**



## 2 Remote Sensing Data Collection



### Overview 37

### Analog (Hard-Copy) Image Digitization 37

Digital Image Terminology 37

Microdensitometer Digitization 38

Video Digitization 40

Linear and Area Array Charge-Coupled-Device Digitization 40

Digitized National Aerial Photography Program (NAPP) Data 42

Digitization Considerations 44

### Digital Remote Sensor Data Collection 44

Multispectral Imaging Using Discrete Detectors and Scanning Mirrors 47

Multispectral Imaging Using Linear Arrays 48

Imaging Spectrometry Using Linear and Area Arrays 48

Airborne Digital Cameras 48

Satellite Analog and Digital Photographic Systems 48

### Multispectral Imaging Using Discrete Detectors and Scanning Mirrors 48

Earth Resource Technology Satellites and Landsat 1-7 Sensor Systems 48

Landsat Multispectral Scanner 51

Landsat Thematic Mapper (TM) 53

Landsat 7 Enhanced Thematic Mapper Plus 57

NOAA Multispectral Scanner Sensors 63

Geostationary Operational Environmental Satellite (GOES) 64

Advanced Very High Resolution Radiometer 67

NOAA Suomi NPOESS Preparatory Project (NPP) 69

SeaStar Satellite and Sea-viewing Wide Field-of-view Sensor (SeaWiFS) 70

SeaWiFS 71

### Multispectral Imaging Using Linear Arrays 73

NASA Earth Observing-1 (EO-1) Advanced Land Imager (ALI) 73

Advanced Land Imager (ALI) 73

NASA Landsat 8 (LDCM - Landsat Data Continuity Mission) 75

Orbital Land Imager 75

SPOT Sensor Systems 76

SPOT 1, 2, and 3 76

SPOT 4 and 5 79

SPOT 6 and 7 81

Pleiades 81

Pleiades 1A and 1B 81

Indian Remote Sensing Systems 82

IRS-1A, -1B, -1C, and -1D 83

CartoSat 84

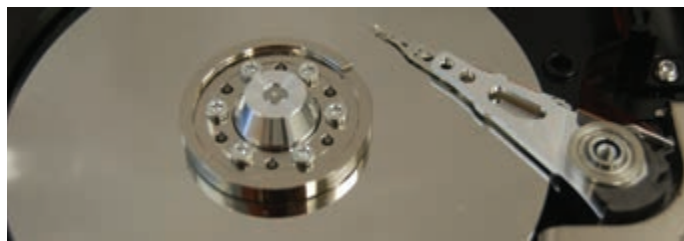
ResourceSat 85

Korean Aerospace Research Institute (KARI) KOMPSATs 85

Astrium, Inc. Sentinel-2 87

- Advanced Spaceborne Thermal Emission and Reflection Radiometer (ASTER) 88**
- Multiangle Imaging Spectroradiometer (MISR) 89**
- GeoEye, Inc. (formerly Space Imaging, Inc.), IKONOS-2, GeoEye-1, GeoEye-2 90**
  - IKONOS-1 and -2 90
  - GeoEye-1 and -2 91
- EarthWatch/DigitalGlobe, Inc., QuickBird, WorldView-1, WorldView-2, WorldView-3 91**
  - QuickBird 92
  - World-View-1, -2, and -3 92
- ImageSat International, Inc., EROS A and EROS B 92**
  - EROS A and EROS B 92
- RapidEye, Inc. 93**
  - RapidEye 93
- DMC International Imaging, Ltd., SLIM-6 and NigeriaSat-2 93**
  - SLIM-6 93
  - DMC-NigeriaSat-2 94
- Imaging Spectrometry Using Linear and Area Arrays 94**
- NASA EO-1 Hyperion Hyperspectral Imager 96**
  - Hyperion 96
- NASA Airborne Visible/Infrared Imaging Spectrometer (AVIRIS) 96**
  - AVIRIS 97
- Moderate Resolution Imaging Spectrometer (MODIS) 97**
- NASA Hyperspectral Infrared Imager (HyspIRI) 98**
- Itres, Inc. Compact Airborne Spectrographic Imager-1500 99**
  - CASI-1500 99
  - SASI-600 99
  - MASI-600 99
  - TASI-600 100
- HyVista, Inc., HyMap 100**
- Airborne Digital Cameras 101**
  - Small-Format Digital Cameras 101**
  - Medium-Format Digital Cameras 102**
    - Leica Geosystems, Ag., RCD30 102
  - Large-Format Digital Cameras 102**
    - Leica Geosystems, Ag., ADS80, Z/I Imaging DMC Aerial Photography 102
    - Microsoft, Inc., UltraCam Eagle 104
  - Digital Oblique Aerial Photography 105**
    - Pictometry International, Inc., Oblique and Vertical Aerial Photography 105
- Satellite Digital Frame Camera Systems 106**
  - U.S. Space Shuttle Photography 106**
    - Space Shuttle Analog Cameras 106
    - Space Shuttle and Space Station Digital Photography 107
- Digital Image Data Formats 108**
  - Band Interleaved by Pixel Format 108**
  - Band Interleaved by Line Format 108**
  - Band Sequential Format 108**
- Summary 108**
- References 108**

### 3 Digital Image Processing Hardware and Software



#### Overview 111

#### Digital Image Processing Hardware Considerations 111

##### Central Processing Unit Considerations 112

History of Central Processing Units and Efficiency Measurement 112

##### Type of Computer 115

Personal Computers 115

Computer Workstations 115

Mainframe Computers 115

##### Read-Only Memory and Random Access Memory 116

##### Serial and Parallel Image Processing 116

#### Mode of Operation and User Interface 116

##### Mode of Operation 116

##### Interactive Graphical User Interface 119

##### Batch Processing 120

#### Computer Operating System and Compiler(s) 120

##### Input Devices 121

##### Output Devices 121

#### Data Storage and Archiving Considerations 122

##### Rapid Access Mass Storage 122

##### Archiving Considerations—Longevity 123

#### Computer Display Spatial and Color Resolution 123

##### Computer Screen Display Resolution 123

##### Computer Screen Color Resolution 125

#### Digital Image Processing Software Considerations 125

##### Image Processing Functions 126

##### Digital Image Processing Software 126

Multispectral Digital Image Processing Software 127

Geographic Object-based Image Analysis (GEOBIA) 127

Hyperspectral Digital Image Processing Software 127

LiDAR Digital Image Processing Software 127

RADAR Digital Image Processing Software 129

Photogrammetric Mapping Software 129

Change Detection 129

Integration of Digital Image Processing and GIS Functions 129

##### Cost 129

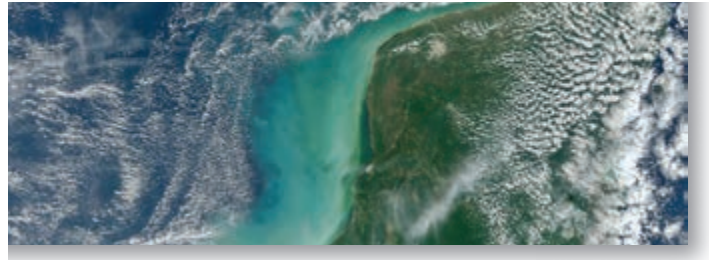
Open-Source Digital Image Processing Software 129

Open-Source Statistical Analysis Software that can be used for Digital Image Processing 129

#### Digital Image Processing and the National Spatial Data Infrastructure 130

#### References 130

## 4 Image Quality Assessment and Statistical Evaluation



---

- Overview 131
- Image Processing Mathematical Notation 131
- Sampling Theory 132
  - Types of Sampling 132
- The Histogram and its Significance to Digital Image Processing 133
- Metadata 134
- Viewing Individual Pixel Values at Specific Locations or within a Geographic Area 137
  - Cursor Evaluation of Individual Pixel Brightness Values 137
  - Two- and Three-dimensional Evaluation of Pixel Brightness Values within a Geographic Area 138
- Univariate Descriptive Image Statistics 138
  - Measure of Central Tendency in Remote Sensor Data 138
  - Measures of Dispersion 138
  - Measures of Distribution (Histogram) Asymmetry and Peak Sharpness 141
- Multivariate Image Statistics 141
  - Covariance in Multiple Bands of Remote Sensor Data 142
  - Correlation between Multiple Bands of Remotely Sensed Data 142
- Feature Space Plots 145
- Geostatistical Analysis, Autocorrelation and Kriging Interpolation 145
  - Calculating Average Semivariance 148
  - Empirical Semivariogram 148
- References 151

## 5 Display Alternatives and Scientific Visualization



### Overview 153

### Image Display Considerations 153

### Black-and-White Hard-Copy Image Display 154

Line Printer/Plotter Brightness Maps 154

Laser or Ink-Jet Printer Brightness Maps 156

### Temporary Video Image Display 156

Black-and-White and Color Brightness Maps 157

Image Data Format and Compression Scheme 157

Bitmapped Graphics 157

RGB Color Coordinate System 160

Color Look-Up Tables: 8-bit 160

Color Look-Up Tables: 24-bit 164

Color Composites 164

Optimum Index Factor 164

Sheffield Index 167

Independent Component Analysis-Based Fusion for Color Display of Hyperspectral Images 167

### Merging (Fusing) Remotely Sensed Data 167

Simple Band Substitution 169

Color Space Transformation and Component Substitution 169

RGB to IHS Transformation and Back Again 169

Chromaticity Color Coordinate System and the Brovey Transformation 172

Principal Component Analysis (PCA), Independent Component Analysis (ICA), or

Gram-Schmidt Substitution 173

Pixel-by-Pixel Addition of High-Frequency Information 175

Fusion based on Regression Kriging 175

Smoothing Filter-Based Intensity Modulation Image Fusion 175

### Length (Distance) Measurement 176

Linear Distance Measurement Based on the Pythagorean Theorem 176

Manhattan Distance Measurement 177

### Perimeter, Area, and Shape Measurement 179

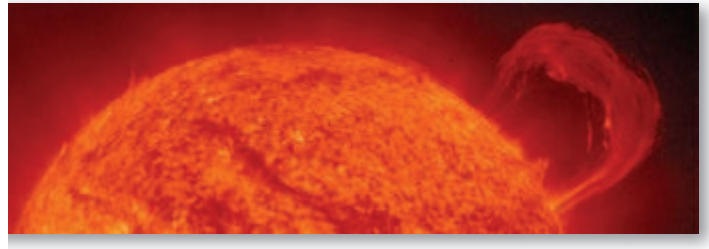
Perimeter Measurement 179

Area Measurement 180

Shape Measurement 181

### References 181

## 6 Electromagnetic Radiation Principles and Radiometric Correction

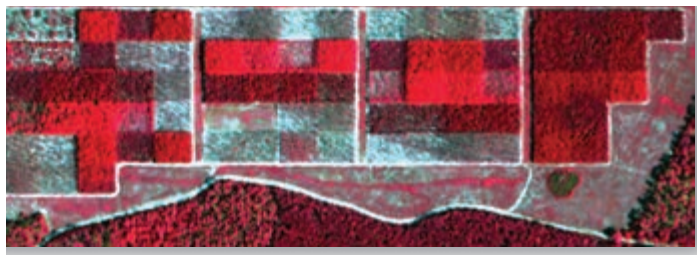


---

- Overview 185
- Electromagnetic Energy Interactions 186
- Conduction, Convection, and Radiation 186
- Electromagnetic Radiation Models 187
  - Wave Model of Electromagnetic Energy 187
  - The Particle Model: Radiation from Atomic Structures 191
- Atmospheric Energy–Matter Interactions 196
  - Refraction 196
  - Scattering 197
  - Absorption 198
  - Reflectance 200
- Terrain Energy–Matter Interactions 201
  - Hemispherical Reflectance, Absorptance, and Transmittance 202
  - Radiant Flux Density 203
    - Irradiance and Exitance 203
    - Radiance 203
- Energy–Matter Interactions in the Atmosphere Once Again 204
- Energy–Matter Interactions at the Sensor System 204
- Correcting Remote Sensing Detector Error 205
  - Random Bad Pixels (Shot Noise) 205
  - Line or Column Drop-Outs 205
  - Partial Line or Column Drop-Outs 207
  - Line-Start Problems 207
  - N-Line Striping 207
- Remote Sensing Atmospheric Correction 208
  - Unnecessary Atmospheric Correction 208
  - Necessary Atmospheric Correction 211
  - Types of Atmospheric Correction 212
  - Absolute Radiometric Correction of Atmospheric Attenuation 212
    - Target and Path Radiance 214
    - Atmospheric Transmittance 215
    - Diffuse Sky Irradiance 216
    - Atmospheric Correction Based on Radiative Transfer Modeling 216
    - Absolute Atmospheric Correction Using Empirical Line Calibration 220
  - Relative Radiometric Correction of Atmospheric Attenuation 223
    - Single-Image Normalization Using Histogram Adjustment 224
    - Multiple-Date Image Normalization Using Regression 224

**Correcting for Slope and Aspect Effects 230****The Cosine Correction 230****The Minnaert Correction 231****A Statistical–Empirical Correction 231****The C Correction 231****Local Correlation Filter 232****References 232**

## 7 Geometric Correction



### Internal and External Geometric Error 235

#### Internal Geometric Error 235

- Image Offset (Skew) Caused by Earth Rotation Effects 235
- Scanning System-Induced Variation in Ground Resolution Cell Size 236
- Scanning System One-Dimensional Relief Displacement 239
- Scanning System Tangential Scale Distortion 240

#### External Geometric Error 240

- Altitude Changes 240
- Attitude Changes 240
- Ground Control Points 242

### Types of Geometric Correction 242

#### Image-to-Map Rectification 242

#### Image-to-Image Registration 243

#### Hybrid Approach to Image Rectification/Registration 243

#### Image-to-Map Geometric Rectification Logic 244

- Spatial Interpolation Using Coordinate Transformations 244
- Intensity Interpolation 250

### An Example of Image-to-Map Rectification 252

#### Selecting an Appropriate Map Projection 252

- Developable Surfaces used to Create Map Projections 253
- Map Projection Characteristics 253
- Cylindrical Map Projections 254
- Azimuthal (Planar) Map Projections 260
- Conical Map Projections 261
- Other Projections and Coordinate Systems Useful for Image Rectification 263

#### Ground Control Point Collection 263

#### Determine Optimum Geometric Rectification Coefficients by Evaluating GCP Total $RMS_{error}$ 263

- Multiple Regression Coefficients Computation 264

#### Fill Output Matrix Using Spatial and Intensity Interpolation Resampling 267

### Mosaicking 267

#### Mosaicking Rectified Images 267

### Conclusion 271

### References 271



## 8 Image Enhancement



### Overview 273

### Image Reduction and Magnification 273

Image Reduction 273

Image Magnification 274

### Transects (Spatial Profiles) 275

### Spectral Profiles 279

### Contrast Enhancement 282

#### Linear Contrast Enhancement 282

Minimum–Maximum Contrast Stretch 282

Percentage Linear and Standard Deviation Contrast Stretching 284

Piecewise Linear Contrast Stretch 286

#### Nonlinear Contrast Enhancement 286

### Band Ratioing 288

### Neighborhood Raster Operations 291

Qualitative Raster Neighborhood Modeling 292

Quantitative Raster Neighborhood Modeling 293

### Spatial Filtering 293

#### Spatial Convolution Filtering 293

Low-frequency Filtering in the Spatial Domain 294

High-frequency Filtering in the Spatial Domain 297

Edge Enhancement in the Spatial Domain 298

#### The Fourier Transform 302

Spatial Filtering in Frequency Domain 306

### Principal Components Analysis (PCA) 308

### Vegetation Indices (VI) 314

#### Dominant Factors Controlling Leaf Reflectance 316

Visible Light Interaction with Pigments in the Palisade Mesophyll Cells 316

Near-Infrared Energy Interaction within the Spongy Mesophyll Cells 320

Middle-Infrared Energy Interaction with Water in the Spongy Mesophyll 323

#### Remote Sensing-Derived Vegetation Indices 325

Simple Ratio—SR 325

Normalized Difference Vegetation Index—NDVI 325

Kauth-Thomas Tasseled Cap Transformation 327

Normalized Difference Moisture or Water Index—NDMI or NDWI 332

Perpendicular Vegetation Index—PVI 333

Leaf Water Content Index—LWCI 333

Soil Adjusted Vegetation Index—SAVI 334

Atmospherically Resistant Vegetation Index—ARVI 335

Soil and Atmospherically Resistant Vegetation Index—SARVI 335

Aerosol Free Vegetation Index—AFRI 335

Enhanced Vegetation Index—EVI 336

Triangular Vegetation Index—TVI 336

Reduced Simple Ratio—RSR 336

- Chlorophyll Absorption in Reflectance Index—CARI 337
- Modified Chlorophyll Absorption in Reflectance Index—MTCARI 337
- Optimized Soil-Adjusted Vegetation Index—OSAVI 337
- Ratio TCARI/OSAVI 337
- Visible Atmospherically Resistant Index—VARI 338
- Normalized Difference Built-Up Index—NDBI 338
- Vegetation Adjusted Nighttime Light (NTL) Urban Index—VANUI 338
- Red-Edge Position Determination—REP 339
- Photochemical Reflectance Index—PRI 339
- NDVI and Cellulose Absorption Index—CAI 339
- MERIS Terrestrial Chlorophyll Index—MTCI 339
- Normalized Burn Ratio—NBR 340
- Vegetation Suppression 340

**Texture Transformations 340**

**First-Order Statistics in the Spatial Domain 340**

- Edge-Preserving Spectral-Smoothing (EPSS) Variance Texture 341
- Conditional Variance Detection 342
- Min–Max Texture Operator 343
- Moran’s *I* Spatial Autocorrelation as a Texture Measure 344

**Second-Order Statistics in the Spatial Domain 345**

**Texture Units as Elements of a Texture Spectrum 348**

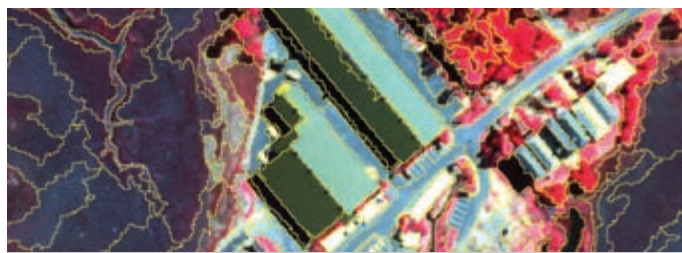
**Texture Statistics Based on the Semi-variogram 349**

**Landscape Ecology Metrics 350**

- Landscape Indicators and Patch Metrics 351

**References 353**

## 9 Thematic Information Extraction: Pattern Recognition



### Overview 361

### Introduction 361

### Supervised Classification 362

#### Land-Use and Land-Cover Classification Schemes 364

American Planning Association *Land-Based Classification Standard (LBCS)* 365

USGS Anderson *Land-Use/Land-Cover Classification System for Use with Remote Sensor Data* 366

*National Land Cover Database (NLCD) Classification System* 367

NOAA *Coastal Change Analysis Program (C-CAP) Classification Scheme* 370

U.S. Department of the Interior Fish & Wildlife Service *Classification of Wetlands and Deepwater Habitats of the United States* 371

U.S. *National Vegetation Classification Standard (NVCS)* 371

International Geosphere-Biosphere Program *IGBP Land-Cover Classification System Modified for the Creation of MODIS Land-Cover Type Products* 374

Observations about Classification Schemes 375

#### Training Site Selection and Statistics Extraction 376

#### Selecting the Optimum Bands for Image Classification: Feature Selection 382

Graphic Methods of Feature Selection 382

Statistical Methods of Feature Selection 386

#### Select the Appropriate Classification Algorithm 393

Parallelepiped Classification Algorithm 393

Minimum Distance to Means Classification Algorithm 395

Nearest-Neighbor Classifiers 396

Maximum Likelihood Classification Algorithm 398

### Unsupervised Classification 402

#### Unsupervised Classification Using the Chain Method 402

Pass 1: Cluster Building 403

Pass 2: Assignment of Pixels to One of the  $C_{max}$  Clusters Using Minimum Distance Classification 404

#### Unsupervised Classification Using the ISODATA Method 406

ISODATA Initial Arbitrary Cluster Allocation 407

ISODATA First Iteration 408; Second to  $M$ th Iteration 409

#### Unsupervised Cluster Busting 412

### Fuzzy Classification 412

### Object-Based Image Analysis (OBIA) Classification 413

#### Geographic Object-Based Image Analysis and Classification 414

#### OBIA Classification Considerations 420

### Incorporating Ancillary Data in the Classification Process 421

#### Problems Associated with Ancillary Data 422

#### Approaches to Incorporating Ancillary Data to Improve Remote Sensing Classification Maps 422

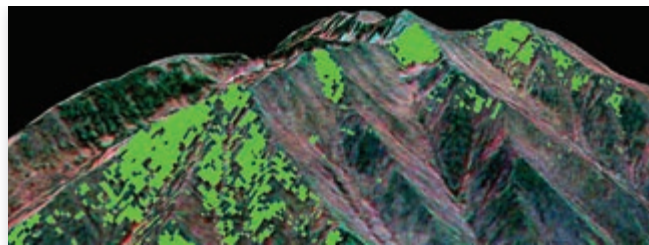
Geographical Stratification 422

Classifier Operations 422

Post-Classification Sorting 423

### References 423

# 10 Information Extraction Using Artificial Intelligence



---

## Overview 430

### Expert Systems 430

#### Expert System User Interface 430

#### Creating the Knowledge Base 430

Algorithmic Approaches to Problem Solving 431

Heuristic Knowledge-Based Expert System Approaches to Problem Solving 431

The Knowledge Representation Process 432

#### Inference Engine 434

#### On-Line Databases 435

#### Expert Systems Applied to Remote Sensor Data 435

### Decision-Tree Classification Based on Human-Derived Rules 435

#### Hypotheses to Be Tested 436

#### Rules (Variables) 436

#### Conditions 436

#### Inference Engine 436

### Classification Based on Machine Learning Decision Trees and Regression Trees 436

#### Machine Learning 438

#### Decision-Tree Training 441

#### Decision-Tree Generation 441

#### From Decision Trees to Production Rules 441

Case Study 442

Advantages of Decision-Tree Classifiers 442

### Random Forest Classifier 444

### Support Vector Machines 444

### Neural Networks 445

#### Components and Characteristics of a Typical Artificial Neural Network Used to Extract Information from Remotely Sensed Data 446

Training an Artificial Neural Network 446

Testing (Classification) 447

Mathematics of the Artificial Neural Network 447

Feed Forward Multi-Layer Perceptron (MLP) Neural Network with Back Propagation (BP) 448

Kohonen's Self-Organizing Map (SOM) Neural Network 450

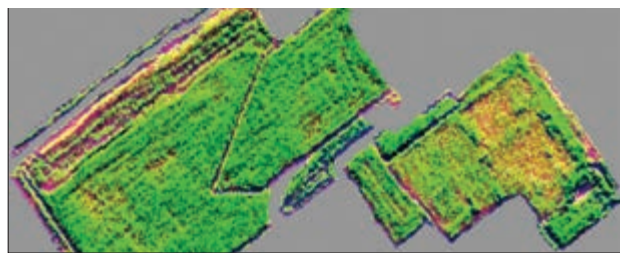
Fuzzy ARTMAP Neural Network 451

#### Advantages of Artificial Neural Networks 451

#### Limitations of Artificial Neural Networks 453

### References 453

# 11 Information Extraction Using Imaging Spectroscopy



## Overview 459

### Panchromatic, Multispectral and Hyperspectral Data Collection 459

**Panchromatic 459**

**Multispectral 460**

**Hyperspectral 460**

Satellite Hyperspectral Sensors 460

Airborne Optical Hyperspectral Sensors 460

Airborne Thermal-Infrared Hyperspectral Sensors 461

### Steps to Extract Information from Hyperspectral Data 462

#### Select Study Area from Flight Lines 465

#### Initial Image Quality Assessment 465

**Visual Examination of Hyperspectral Color Composite Images 465**

**Visual Individual Band Examination 465**

**Animation 465**

**Statistical Individual Band Examination 467**

#### Radiometric Calibration 467

***In Situ* Data Collection 468**

**Absolute Atmospheric Correction 469**

Radiative Transfer-Based Absolute Atmospheric Correction 469

Absolute Atmospheric Correction using Empirical Line Calibration 471

#### Geometric Correction of Hyperspectral Remote Sensor Data 471

#### Reducing the Dimensionality of Hyperspectral Data 472

**Minimum Noise Fraction (MNF) Transformation 472**

#### Endmember Determination: Locating the Spectrally Purest Pixels 474

**Pixel Purity Index Mapping 475**

***n*-Dimensional Endmember Visualization 475**

#### Mapping and Matching using Hyperspectral Data 479

**Spectral Angle Mapper 479**

**Subpixel Classification, Linear Spectral Unmixing or Spectral Mixture Analysis 480**

**Continuum Removal 484**

**Spectroscopic Library Matching Techniques 484**

**Machine Learning Analysis of Hyperspectral Data 487**

Decision Tree Analysis of Hyperspectral Data 487

Support Vector Machine (SVM) Analysis of Hyperspectral Data 491

#### Selected Indices Useful for Hyperspectral Data Analysis 491

**Reduced Simple Ratio 492**

**Normalized Difference Vegetation Index—NDVI 492**

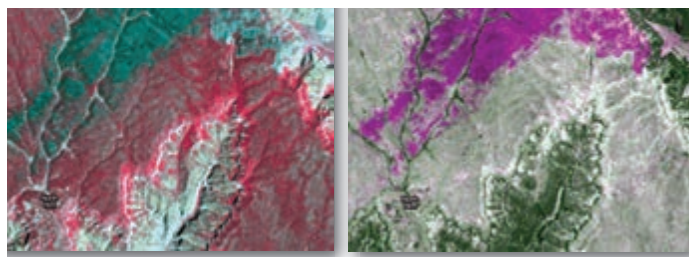
**Hyperspectral Enhanced Vegetation Index—EVI 492**

**Yellowness Index—YI 492**

**Physiological Reflectance Index—PRI 492**

- Normalized Difference Water Index—NDWI 493
- Linear Red-Edge Position—REP 493
- Red-Edge Vegetation Stress Index (RVSI) 494
- Crop Chlorophyll Content Prediction 494
- Modified Chlorophyll Absorption Ratio Index (MCARI1) 494
- Chlorophyll Index 494
- Medium Resolution Imaging Spectrometer (MERIS) Terrestrial Chlorophyll Index (MTCI) 494
- Derivative Spectroscopy 494
  - Narrow-Band Derivative-Based Vegetation Indices 495
  - Red-Edge Position Based on Derivative Ratio 496
- References 496

## 12 Change Detection



### Overview 501

#### Steps Required to Perform Change Detection 501

Specify the Thematic Attribute(s) or Indicator(s) of Interest 501

Specify the Change Detection Geographic Region of Interest (ROI) 501

Specify the Change Detection Time Period 502

Select an Appropriate Land-Use/Land-Cover Classification System 502

Select Hard (Crisp) and/or Soft (Fuzzy) Change Detection Logic 502

Select Per-pixel or Object-Based Change Detection (OBCD) 504

Remote Sensing System Change Detection Considerations 504

Temporal Resolution 504

Look Angle 505

Spatial Resolution 505

Spectral Resolution 505

Radiometric Resolution 506

Environmental/Developmental Considerations of Importance When Performing Change Detection 506

Atmospheric Conditions 506

Soil Moisture Conditions 507

Phenological Cycle Characteristics 508

Obscuration Considerations 511

Effects of Tidal Stage on Change Detection 511

Select the Most Appropriate Change Detection Algorithm 512

#### Binary Change Detection Algorithms Provide “Change/No-Change” Information 514

Analog “On-Screen” Visualization Change Detection 514

Esri, Inc., ChangeMatters® 516

Binary Change Detection Using Image Algebra 518

Image Differencing Change Detection 518

Image Algebra Band Ratioing Change Detection 519

Image Algebra Change Detection Using Statistical or Symmetric Thresholds 522

Image Algebra Change Detection Using Asymmetric Thresholds 522

Image Algebra Change Detection Using Moving Threshold Windows (MTW) 522

Multiple-Date Composite Image Change Detection 523

Supervised and Unsupervised Classification of Multiple-Date Composite Image to Detect Change 523

Principal Components Analysis (PCA) Composite Image Change Detection 523

MDA Information Systems, LLC., National Urban Change Indicator (NUCI)® 526

Continuous Change Detection and Classification (CCDC) using Landsat Data 528

#### Thematic “From-To” Change Detection Algorithms 529

Photogrammetric Change Detection 529

LiDARgrammetric Change Detection 531

Post-Classification Comparison Change Detection 532

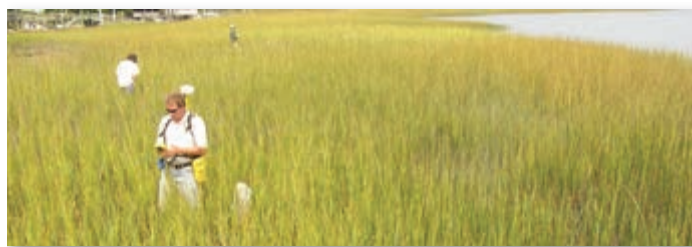
Per-Pixel Post-Classification Comparison 533

OBIA Post-Classification Comparison 534

- Neighborhood Correlation Image (NCI) Change Detection 538**
- Spectral Change Vector Analysis 542**
- Change Detection Using an Ancillary Data Source as Date 1 543**
- Change Detection Using a Binary Change Mask Applied to Date 2 544**
- Chi-Square Transformation Change Detection 545**
- Cross-Correlation Change Detection 545**
- Visual On-Screen Change Detection and Digitization 546**
  - Hurricane Hugo Example 546
  - Hurricane Katrina Example 548
  - Aral Sea Example 548
  - National Land Use/Cover Database of China Example 548
- Atmospheric Correction for Change Detection 548**
  - When Atmospheric Correction Is Necessary 548**
  - When Atmospheric Correction Is Unnecessary 551**
- Summary 551**
- References 551**



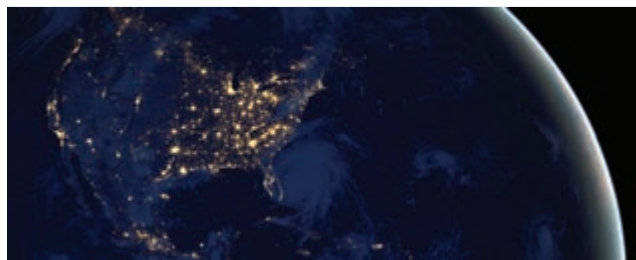
## 13 Remote Sensing-Derived Thematic Map Accuracy Assessment




---

Overview	557
Steps to Perform Accuracy Assessment	557
Sources of Error in Remote Sensing-Derived Thematic Maps	558
The Error Matrix	561
Training versus Ground Reference Test Information	562
Sample Size	563
Sample Size Based on Binomial Probability Theory	563
Sample Size Based on Multinomial Distribution	563
Sampling Design (Scheme)	564
Simple Random Sampling	565
Systematic Sampling	566
Stratified Random Sampling	566
Stratified Systematic Unaligned Sampling	567
Cluster Sampling	567
Obtaining Ground Reference Information at Locations Using a Response Design	568
Evaluation of Error Matrices	569
Descriptive Evaluation of Error Matrices	569
Discrete Multivariate Techniques Applied to the Error Matrix	570
Kappa Analysis	570
Fuzzification of the Error Matrix	571
Change Detection Map Accuracy Assessment	575
Assessing the Accuracy of the Individual Thematic Maps used in a Change Detection Study	576
Assessing the Accuracy of a "From-To" Change Detection Map	576
Response Design	576
Sampling Design	576
Analysis	577
Assessing the Accuracy of a Binary Change Detection Map	577
Assessing the Accuracy of an Object-Based Image Analysis (OBIA) Classification Map	578
Geostatistical Analysis in Support of Accuracy Assessment	578
Image Metadata and Lineage Information for Remote Sensing-Derived Products	579
Individual Image Metadata	579
Lineage of Remote Sensing-Derived Products	579
References	580

# Appendix: Sources of Imagery and Other Geospatial Information



---

## Table of Contents 583

- Federal Image and Geospatial Data Search Engines and Repositories 583
- Commercial Image and Geospatial Data Search Engines and/or Repositories 583
- Digital Elevation Data 583
- Hydrography Data 583
- Land Use/Land Cover and Biodiversity/Habitat Data 584
- Population Demographic Data 584
- Remote Sensor Data – Public 584
- Remote Sensor Data – Commercial and International 584

## Federal Geospatial Data Search Engines and Repositories 584–587

- USGS *EarthExplorer* 584
- USGS *The National Map* 585
- USGS *Global Visualization Viewer* 586
- Data.gov 587

## Commercial Geospatial Data Search Engines and/or Repositories 587–591

- Google, Inc., *Google earth* Search Engine 587
- Microsoft, Inc., *bing* Search Engine 588
- Esri, Inc., *ArcGIS Online Map and Geoservices* 589
  - Esri Map Services 589
  - Esri Image Services 590

## Digital Elevation Data 591–593

- GTOPO30 592
- NED—National Elevation Dataset 592
- Topographic-Bathymetric Information 592
- Topographic Change Information 592
- SRTM—Shuttle RADAR Topography Mission 592
- ASTER Global Digital Elevation Model (GDEM V2) 593
- NEXTMap World 30 DSM (Intermap, Inc.) 593

## Hydrography Data 593–594

- NHD—National Hydrography Dataset 594
- EDNA—Elevation Derivatives for National Applications 594

## Land Use/Land Cover and Biodiversity/Habitat Data 593, 595

- NLCD—National Land Cover Database 1992, 2001, 2006, 2011 595
- C-CAP—Coastal Change Analysis Program 595
- GAP Analysis Program 595
- NWI—National Wetlands Inventory 595

## Road Network and Population Demographic Data 596–597

- MAF/TIGER Line 597
- 2010 Census Population Demographics 597
- LandScan Population Distribution Modeling 597

**Remote Sensor Data—Public 596, 598–600**

- ASTER—Advanced Spaceborne Thermal Emission and Reflection Radiometer 598
- AVHRR—Advanced Very High Resolution Radiometer 598
- AVIRIS—Airborne/Visible Imaging Spectrometer 598
- Declassified Satellite Imagery 598
- DOQ—Digital Orthophoto Quadrangles 599
- Landsat—MSS, TM, ETM<sup>+</sup>, Landsat 8 599
- LiDAR—Light Detection and Ranging 599
- MODIS—Moderate Resolution Imaging Spectrometer 599
- NAIP—National Agriculture Imagery Program 600
- Suomi—NPOESS Preparatory Project 600

**Remote Sensor Data—Commercial and International 596, 600–602**

- CASI-1500 600
- SASI-600 600
- MASI-600 600
- TASI-600 600
- EROS A and B 600
- GeoEye-1 and -2 601
- HyMap 601
- IKONOS-2 601
- Indian IRS-1A, -1B, -1C and -1D 601
- Indian CartoSat-1, -2, -2A, -2B, and -3 601
- ResourceSat-1 and -2 601
- Korean KOMPSAT1-5 601
- PICTOMETRY 601
- Pleiades-1 and -2 602
- QuickBird 602
- RapidEye 602
- Sentinel-2 602
- SPOT 1-7 602
- WorldView-1, -2, and -3 602

**Index 603**

# Preface

## New to the 4th Edition

The 4th edition of *Introductory Digital Image Processing: A Remote Sensing Perspective* provides up-to-date information on analytical methods used to analyze digital remote sensing data. The book is ideal for introductory through graduate level university instruction in departments that routinely analyze airborne and/or satellite remote sensor data to solve geospatial problems, including: geography, geology, marine science, forestry, anthropology, biology, soil science, agronomy, urban planning, and others.

*Introductory Digital Image Processing* (4<sup>th</sup> edition) is now in full-color. This is important because many digital image processing concepts are best described and demonstrated using a) color diagrams and illustrations, b) the original digital remote sensing displayed in color, and c) digital image processing-derived color images and thematic maps. The reader can now examine the color illustrations and images at their appropriate location in the book rather than having to go to a special signature of color plates.

The goal of this book has always been to take relatively sophisticated digital image processing methods and algorithms and make them as easy to understand as possible for students and for remote sensing scientists. Therefore, the reader will notice that each chapter contains a substantial reference list that can be used by students and scientists as a starting place for their digital image processing project or research. A new appendix provides sources of imagery and other geospatial information. Below is a summary of the major content and improvements in the fourth edition.

## Chapter 1: Remote Sensing and Digital Image Processing

Greater emphasis is now placed on the importance of ground reference information that can be used to calibrate remote sensor data and assess the accuracy of remote sensing-derived products such as thematic maps. The “Remote Sensing Process” has been updated to reflect recent innovations in digital image processing. Greater emphasis is now placed on the use of remote sensing to solve local, high-spatial resolution problems

as well as for use in global climate change research. This chapter now includes detailed information about the increasing demand for people trained in remote sensing digital image processing. Information is provided from a) the NRC (2013) *Future U.S. Workforce for Geospatial Intelligence* study, and b) U.S. Department of Labor Employment and Training Administration (USDOLETA, 2014) data about the 39,900 “Remote Sensing Scientists and Technologists” and “Remote Sensing Technicians” job openings projected from 2012–2022. Many of these geospatial occupations require training in remote sensing digital image processing.

## Chapter 2: Remote Sensing Data Collection

This chapter provides information about historical, current, and projected sources of remotely sensed data. Detailed information about new and proposed satellite remote sensing systems (e.g., Astrium’s Pleiades and SPOT 6; DigitalGlobe’s GeoEye-1, GeoEye-2, WorldView-1, WorldView-2, WorldView-3; India’s CartoSat and ResourceSat; Israel’s EROS A2; Korea’s KOMPSAT; NASA’s Landsat 8; NOAA’s NPOESS; RapidEye, etc.) and airborne remote sensing systems (e.g., PICTOMETRY, Microsoft’s UltraCAM, Leica’s Airborne Digital System 80) are included in the fourth edition. Technical details about decommissioned (e.g., SPOT 1, 2; Landsat 5), degraded (e.g., Landsat 7 ETM<sup>+</sup>) or failed (e.g., European Space Agency Envi-sat) sensor systems are provided.

## Chapter 3: Digital Image Processing Hardware and Software

As expected, the computer hardware (e.g., CPUs, RAM, mass storage, digitization technology, displays, transfer/storage technology) and software [e.g., multi-spectral, hyperspectral, per-pixel, object-based image analysis (OBIA)] necessary to perform digital image processing have progressed significantly since the last edition. Improvements in computer hardware often used to perform digital image processing are discussed. The most important functions, characteristics and

sources of the major digital image processing software are provided.

## Chapter 4: Image Quality Assessment and Statistical Evaluation

Basic digital image processing mathematical notation is reviewed along with the significance of the histogram. The importance of metadata is introduced. Visual methods of assessing image quality are presented including three-dimensional representation. Univariate and multivariate methods of assessing the initial quality of digital remote sensor data are refreshed. A new section on geostatistical analysis, autocorrelation, and kriging interpolation is provided.

## Chapter 5: Display Alternatives and Scientific Visualization

New information is provided on: liquid crystal displays (LCD), image compression alternatives, color coordinate systems (RGB, Intensity-Hue-Saturation, and Chromaticity), the use of 8- and 24-bit color look-up tables, and new methods of merging (fusing) different types of imagery (e.g., Gram-Schmidt, regression Kriging). Additional information is provided about measuring distance, perimeter, shape, and polygon area using digital imagery.

## Chapter 6: Electromagnetic Radiation Principles and Radiometric Correction

Additional information is provided about electromagnetic radiation principles (e.g., Fraunhofer absorption features) and the spectral reflectance characteristics of selected natural and human-made materials. Updated information about the most important radiometric correction algorithms is provided, including: a) those that perform absolute radiometric correction (e.g., ACORN, FLAASH, QUAC, ATCOR, empirical line calibration) and, b) those that perform relative radiometric correction (e.g., single and multiple-date image normalization).

## Chapter 7: Geometric Correction

Traditional as well as improved methods of image-to-map rectification and image-to-image registration are provided. In addition, this edition contains an expanded discussion on developable surfaces and the properties and advantages/disadvantages of several of the

most heavily used cylindrical, azimuthal, and conical map projections. MODIS satellite imagery is projected using selected map projections (e.g., Mercator, Lambert Azimuthal Equal-area). The image mosaicking section contains new examples and demonstrates the characteristics of the USGS annual mosaic of Landsat ETM<sup>+</sup> data (i.e., the *WELD: Web-enabled Landsat Data* project).

## Chapter 8: Image Enhancement

The image magnification and reduction sections are revised. In addition, the following image enhancement techniques are updated: band ratioing, neighborhood raster operations, spatial convolution filtering and edge enhancement, frequency filtering, texture extraction, and Principal Components Analysis (PCA). The vegetation indices (VI) section has been significantly revised to include new information on the dominant factors controlling leaf reflectance and the introduction of numerous new indices with graphic examples. Several new texture transforms are introduced (e.g., Moran's *I* Spatial Autocorrelation) and new information is provided on the extraction of texture from images using Grey-level Co-occurrence Matrices (GLCM). The chapter concludes with a new discussion on landscape ecology metrics that can be extracted from remotely sensed data.

## Chapter 9: Thematic Information Extraction: Pattern Recognition

Updated information on the American Planning Association Land-Based Classification Standard (NLCS), the U.S. National Land Cover Database (NLCD) Classification System, NOAA's Coastal Change Analysis Program (C-CAP) Classification Scheme, and the IGBP Land-Cover Classification System is included. New methods of feature (band) selection are introduced (e.g., Correlation Matrix Feature Selection). Additional information is provided on Object-Based Image Analysis (OBIA) classification methods, including new OBIA application examples.

## Chapter 10: Information Extraction Using Artificial Intelligence

New information is provided on image classification using machine-learning decision trees, regression trees, Random Forest (trees), and Support Vector Machines (SVM). Detailed information is now provided on a number of machine-learning, data-mining decision tree/regression tree programs that can be used to devel-

op production rules (e.g., CART, S-Plus, R Development Core Team, C4.5, C5.0, Cubist). New information about advances in neural network analysis of remote sensor data is included for Multi-layer Perceptrons, Kohonen's Self-Organizing Map, and fuzzy ARTMAP neural networks. A new discussion about the advantages and disadvantages of artificial neural networks is provided.

## Chapter 11: Information Extraction Using Imaging Spectroscopy

Advances in airborne and satellite hyperspectral data collection are discussed. Advances in the methods used to process and analyze hyperspectral imagery are provided, including: end-member selection and analysis, mapping algorithms, Spectral Mixture Analysis (SMA), continuum removal, spectroscopic library matching techniques, machine-learning hyperspectral analysis techniques, new hyperspectral indices, and derivative spectroscopy.

## Chapter 12: Change Detection

This book has always contained detailed digital change detection information. New information is provided on the impact of sensor system look angle and amount of tree or building obscuration. Advances in binary "change/no-change" algorithms are provided including new analytical methods used to identify the change thresholds and new commercial change detection products such as ESRI's *Change Matters* and MDA's *National Urban Change Indicator*. Significant advances

in thematic "from-to" change detection algorithms are discussed including photogrammetric and LiDAR-grammetric change detection, OBIA post-classification comparison change detection, and Neighborhood Correlation Image (NCI) change detection.

## Chapter 13: Remote Sensing-Derived Thematic Map Accuracy Assessment

There is a significant amount of literature and debate about the best method(s) to use to determine the accuracy of remote sensing-derived thematic map produced from a single date of imagery or a thematic map derived from multiple dates of imagery (i.e., change detection). The accuracy assessment alternatives and characteristics of the debate are discussed more thoroughly.

## Appendix: Sources of Imagery and Other Geospatial Information

Remote sensing data is analyzed best when used in conjunction with other geospatial information. To this end, a new appendix is provided that contains a list of selected geospatial datasets that can be evaluated and/or downloaded via the Internet, including: digital elevation information, hydrology, land use/land cover and biodiversity/habitat, road network and population demographic data, and several types of publicly- and commercially-available remote sensor-data. Map or image examples of the datasets are presented where appropriate.

# About Our Sustainability Initiatives

Pearson recognizes the environmental challenges facing this planet, as well as acknowledges our responsibility in making a difference. This book is carefully crafted to minimize environmental impact. The binding, cover, and paper come from facilities that minimize waste, energy consumption, and the use of harmful chemicals. Pearson closes the loop by recycling every out-of-date text returned to our warehouse.

Along with developing and exploring digital solutions to our market's needs, Pearson has a strong commitment to achieving carbon-neutrality. As of 2009, Pearson became the first carbon- and climate-

neutral publishing company. Since then, Pearson remains strongly committed to measuring, reducing, and offsetting our carbon footprint.

The future holds great promise for reducing our impact on Earth's environment, and Pearson is proud to be leading the way. We strive to publish the best books with the most up-to-date and accurate content, and to do so in ways that minimize our impact on Earth.

To learn more please visit: <https://www.pearson.com/social-impact.html>.

# Acknowledgements

**The author appreciates the help provided by the following people:**

- Marvin Bauer, Editor-in-Chief, *Remote Sensing of Environment*, Minneapolis, MN.
- Paul Beaty, ERDAS, Intergraph Inc., Atlanta, GA.
- Jigyasa Bhatia, Project Manager, Cenveo Publisher Services, Inc., Noida, India.
- Christian Botting, Senior Editor: Geography, Meteorology, Geospatial Technologies, Pearson Arts & Sciences, Boston, MA.
- Pat Bresnahan, Director, Richland County GIS Division, Columbia, SC.
- Keith Clarke, Department of Geography, University of California at Santa Barbara, CA, reviewer.
- Leslie Godwin, Geography Division, U.S. Bureau of the Census.
- Russ Congalton, Department of Natural Resources & the Environment, University of New Hampshire, reviewer.
- John Copple, CEO, Sanborn Map Company, Inc., Colorado Springs, CO.
- Dave Cowen, Department of Geography, University of South Carolina, Columbia, SC.
- John Dykstra, MDA Information Systems, LLC.
- Tony Filippi, Department of Geography, Texas A&M University, reviewer.
- Brian Hayman, Publisher, *GIScience & Remote Sensing*, Bellwether Publishing, Columbia, MD.
- Mike Hodgson, Department of Geography, University of South Carolina, Columbia, SC.
- Jung-ho Im, Ulsan National Institute of Science and Technology, Korea, reviewer.
- Ryan Jensen, Dept. of Geography, Brigham Young University, Provo, UT.
- Raghavi Khullar, Associate Project Manager, Cenveo Publisher Services, Inc., Noida, India
- Charlie Mondello, Executive Vice-president, PICTOMETRY International, Inc., Rochester, NY.
- Dan Morgan, Director, GIS Department, Beaufort County, SC.
- George Raber, Department of Geography, University of Southern Mississippi, reviewer.

- Kevin Remington, Department of Geography, University of South Carolina, Columbia, SC.
- Lynn Shirley, Department of Geography, University of South Carolina, Columbia, SC.
- Doug Stow, Department of Geography, California State University at San Diego, reviewer.
- Jason Tullis, Department of Geography, University of Arkansas, reviewer.

**The following individuals, agencies, and commercial firms provided data, imagery, and/or software used to create the illustrations:**

- Airbus Defense & Space, Inc.: information about SPOT, Pleiades, and other satellite remote sensing systems.
- American Society for Photogrammetry & Remote Sensing, Bethesda, MD: selected figures published in *Photogrammetric Engineering & Remote Sensing*.
- Beaufort County, SC, GIS Department: digital aerial photography and parcel data.
- Bellwether Publishing, Ltd.: selected figures published in *GIScience & Remote Sensing*.
- Blackbridge, Inc.: information about RapidEye satellite products.
- DigitalGlobe, Inc.: use of IKONOS, GeoEye-1, QuickBird, Worldview-1, Worldview-2, and Worldview-3 satellite imagery.
- DMC International Imaging, Ltd.: information about their imaging systems.
- Elsevier Publishing, Ltd.: selected figures published in *Remote Sensing of Environment*.
- Esri, Inc.: ArcGIS, ArcMap, and ArcCatalog graphical user interfaces are the intellectual property of Esri and are used herein by permission; information about ChangeMatters software. All rights reserved.
- Exelis, Inc.: information about ENVI, QUAC, and FLAASH image processing software and graphical user interfaces.
- Geoscience Australia: enhanced Landsat 8 image of northwestern Australia.
- Geosystems, GmbH: images and information about ATCOR atmospheric correction software.

- Google<sup>®</sup>, Inc.: photograph of *Google earth*<sup>®</sup> interface.
- Hexagon Geospatial<sup>®</sup>, Inc., and Intergraph<sup>®</sup>, Inc.: information about ERDAS Imagine<sup>®</sup> image processing software and graphical user interface.
- HyVista<sup>®</sup>, Inc.: information about the HyMap<sup>®</sup> hyperspectral sensor system.
- ImageSat International<sup>®</sup>, Inc.: information about EROS A and EROS B.
- Indian Space Research Organization (ISRO) and the National Remote Sensing Centre (NRSC): information about various imaging systems.
- Intel<sup>®</sup>, Inc.: data and information about microprocessors.
- Itres Research<sup>®</sup>, Ltd., of Canada: information about their remote sensing systems.
- Korean Aerospace Research Institute (KARI): information about various imaging systems.
- Leica Geosystems<sup>®</sup>, Inc.: information about imaging and LiDAR sensor systems and the Leica Photogrammetry Suite<sup>®</sup> software.
- MDA Information Systems<sup>®</sup>, LLC.: information about the National Urban Change Indicator (NUCI)<sup>®</sup> software.
- Microsoft<sup>®</sup>, Inc.: information about the UltraCam Eagle<sup>®</sup> camera and *bing*<sup>®</sup> search engine.
- National Aeronautics & Space Administration (NASA) and Jet Propulsion Laboratory (JPL): ASTER, AVIRIS, G-Projector software, Landsat Thematic Mapper and ETM<sup>+</sup>, Landsat 8, MODIS, SRTM.
- National Archives and Records Administration (NARA): gray-scale and color cards.
- National Oceanic and Atmospheric Administration (NOAA): AVHRR, Coastal Change Analysis Program (C-CAP), NOAA Geophysical Data System (GEODAS).
- Oak Ridge National Laboratory (ORNL): Land-Scan description.
- PICTOMETRY International<sup>®</sup>, Inc. and Eagleview<sup>®</sup>, Inc.; digital vertical and oblique aerial photography and ChangeFinder<sup>®</sup> software.
- Sanborn Map Company<sup>®</sup>, Inc.: digital aerial photography.
- Sensefly<sup>®</sup>, LLC.: unmanned aerial vehicle (UAV) photograph.
- State of Utah, Automated Geographic Reference Center (AGRC): aerial photography of Utah.
- Taylor & Francis Publishing, Ltd.: selected figures published in *International Journal of Remote Sensing*, *Geocarto International*, and *GIScience & Remote Sensing*.
- U.S. Bureau of the Census: for permission to use Jensen et al. (2012) report on change detection.
- U.S. Department of Agriculture (USDA): National Agricultural Imagery Program (NAIP).
- U.S. Fish & Wildlife Service (USF&WS): National Wetlands Inventory (NWI) classification scheme.
- U. S. Geological Survey (USGS): Declassified satellite imagery, Digital Orthophoto Quadrangles (DOQ), *Earth Explorer* website, Elevation Derivatives for National Applications (EDNA), GAP Analysis Program, *Data.gov* website, Global Visualization Viewer (GLOVIS) website, GTOPO30, historical terrestrial photographs, Landsat 8, LiDAR, National Map, National Elevation Dataset (NED), National Hydrography Dataset (NHD), National Land Cover Dataset (NLCD), Map Projections, US Topo data, Web-enabled Landsat Data (WELD).
- The Nature Conservancy: permission to use sponsored research results.

I appreciate the thoughtful editorial support provided by Christian Botting (Senior Editor: Geography, Meteorology, Geospatial Technologies) and Crissy Dudonis of Pearson, Inc. Raghavi Khullar and Jigyasa Bhatia of Cenveo Publishing Services provided quality production support.

Special thanks goes to my wife, Marsha, for her continuous encouragement, sacrifice, and help.

**John R. Jensen**  
*University of South Carolina*



# About the Author

**John R. Jensen** received a BA in geography from California State University at Fullerton, an MS from Brigham Young University (BYU), and a PhD from the University of California at Los Angeles (UCLA). He is a Carolina Distinguished Professor Emeritus in the Department of Geography at the University of South Carolina. He is a certified photogrammetrist and a past president of the American Society for Photogrammetry & Remote Sensing (ASP&RS): The Geospatial Information Society.

Dr. Jensen has conducted more than 50 remote sensing-related research projects sponsored by NASA, DOE, NOAA, U.S. Bureau of the Census, and the Nature Conservancy and published more than 120 refereed journal articles. He has mentored 34 Ph.D. and 62 master's students.

Dr. Jensen received the *SAIC/ASP&RS John E. Estes Memorial Teaching Award* for education, mentoring, and training in remote sensing and GIS. He received the U.S. Geological Survey (USGS)/National Aeronautics & Space Administration (NASA) *William T. Pecora Award* for his remote sensing research contributions. He received the Association of American Geographers (AAG) *Lifetime Achievement Award* for research and education in remote sensing and GIScience. He became an *Honorary Member* of the ASP&RS in 2013.

He has served on numerous editorial boards and was the Editor-in-chief of the journal *GIScience & Remote Sensing* now published by Taylor & Francis. He is co-author of *Introductory Geographic Information Systems* and author of *Remote Sensing of the Environment: An Earth Resource Perspective*, 2nd edition, also published by Pearson.

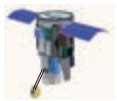
Dr. Jensen has been associated with eight National Research Council (NRC) remote sensing-related committees and subsequent National Academy Press publications.

This page intentionally left blank

# 1 REMOTE SENSING AND DIGITAL IMAGE PROCESSING



Scientists observe nature and man-made phenomena, make measurements, and then attempt to test hypotheses concerning these phenomena. The data collection may take place directly in the field (referred to as *in situ* or in-place data collection), and/or at some remote distance from the subject matter (commonly referred to as **remote sensing** of the environment). Remote sensing technology is now used routinely to obtain accurate, timely information for a significant variety of applications, including: the study of daily weather and long-term climate change; urban-suburban land-use/land cover monitoring; ecosystem modeling of vegetation, water, snow/ice; food security; military reconnaissance; and many others (NRC, 2007ab, 2009, 2013, 2014). The majority of the remotely sensed data are analyzed using digital image processing techniques.



## Overview

This chapter introduces basic *in situ* data-collection considerations. Remote sensing is then formally defined along with its advantages and limitations. The remote sensing-process is introduced with particular attention given to: a) the statement of the problem, b) identification of *in situ* and remote sensing data requirements, c) remote sensing data collection using satellite and airborne sensor systems, d) the conversion of remote sensing data into information using analog and/or digital image processing techniques, and e) accuracy assessment and information presentation alternatives. Earth observation economics are considered along with remote sensing and digital image processing careers in the public and private sectors. The organiza-

tion of the book is reviewed along with its earth resource analysis perspective.



## In Situ Data Collection

One form of *in situ* data collection involves the scientist questioning the phenomena of interest. For example, a census enumerator may go door to door, asking people questions about their age, sex, education, income, etc. These data are recorded and used to document the demographic characteristics of the population.

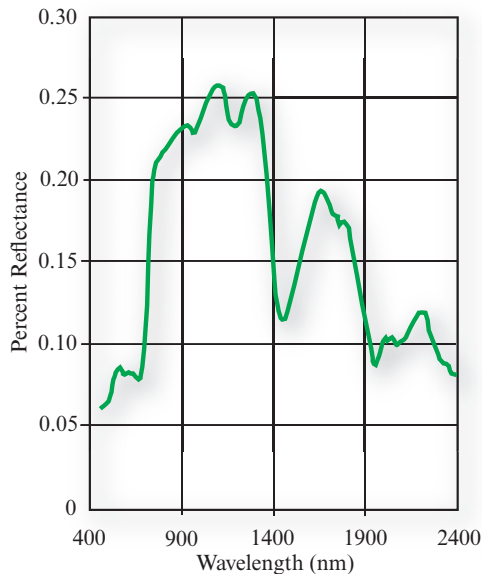
Conversely, a scientist may use a transducer or other *in situ* instrument to make measurements. Transducers are usually placed in direct physical contact with the object of interest. Many different types of transducers are available. For example, a scientist could use a thermometer to measure the temperature of the air, soil, or water; an anemometer to measure wind speed; or a psychrometer to measure air humidity. The data recorded by the transducers may be an analog electrical signal with voltage variations related to the intensity of the property being measured. Often these analog signals are transformed into digital values using analog-to-digital (A-to-D) conversion procedures. *In situ* data collection using transducers relieves the scientist of monotonous data collection often in inclement weather. Also, the scientist can distribute the transducers at geographic locations throughout the study area, allowing the same type of measurement to be obtained at many locations at the same time. Sometimes data from the transducers are telemetered electronically to a central collection point for rapid evaluation and archiving.

*In Situ* Measurement

a. Vegetation height and GPS location measurement near Monticello, UT.



b. Spectral reflectance measurement of grassland near Monticello, UT.



c. Spectral reflectance characteristics of the grassland in Figure 1-1b.



d. Above-canopy calibration of a ceptometer used to measure leaf-area-index (LAI) near Monticello, UT.

**FIGURE 1-1** *In situ* (in-place) data are collected in the field. a) Vegetation height is being measured using a simple metal ruler and geographic location is measured using a hand-held GPS unit. b) Vegetation spectral reflectance information is being collected using a spectroradiometer held approximately 1 m above the canopy. The *in situ* spectral reflectance measurements may be used to calibrate the spectral reflectance measurements obtained from a remote sensing system. c) Spectral reflectance characteristics of the area on the ground in Figure 1-1b. d) The leaf-area-index (LAI) of the grassland can be measured using a ceptometer that records the number of “sunflecks” that pass through the vegetation canopy. Ceptometer measurements are made just above the canopy as shown and on the ground below the canopy. These measurements are then used to compute *in situ* LAI that can be used to calibrate remote sensing-derived LAI estimates.

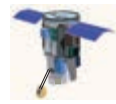
Several examples of *in situ* data collection on a grassland near Monticello, UT, are demonstrated in Figure 1-1. A stake is used to mark the location of *in situ* sample “UPL 5” in Figure 1-1a. A hand-held Global Positioning System (GPS) unit is placed at the base of the stake to obtain precise  $x, y$ , and  $z$  location information about the sample with a horizontal accuracy of approximately  $\pm 0.25$  m. A dimensionally-stable metal ruler is used to measure the height of the grass at the sample location. A hand-held spectroradiometer is used to measure the spectral reflectance characteristics of the materials within the Instantaneous-Field-Of-View (IFOV) of the radiometer on the ground (Figure 1-1b). The spectral reflectance characteristics of the grassland within the IFOV from 400 – 2,400 nm are shown in Figure 1-1c. A hand-held ceptometer is being used to collect information about incident skylight above the vegetation canopy in Figure 1-1d. The scientist will then place the ceptometer on the ground beneath the vegetation canopy present. Approximately 80 photo-diodes along the linear ceptometer measure the amount of light that makes its way through the vegetation canopy to the ceptometer. The above- and below-canopy ceptometer measurements are used to compute the Leaf-Area-Index (LAI) at the sample location. The greater the amount of vegetation, the greater the LAI. Interestingly, all of these measurement techniques are non-destructive (i.e., vegetation clipping or harvesting is not required).

Data collection by scientists in the field or by instruments placed in the field provides much of the data for physical, biological, and social science research. However, it is important to remember that no matter how careful the scientist is, error may be introduced during the *in situ* data-collection process. First, the scientist in the field can be *intrusive*. This means that unless great care is exercised, the scientist can actually change the characteristics of the phenomenon being measured during the data-collection process. For example, a scientist collecting a vegetation spectral reflectance reading could inadvertently step on the sample site, disturbing the vegetation prior to data collection.

Scientists may also collect data in the field using biased procedures. This introduces *method-produced error*. It could involve the use of a biased sampling design or the systematic, improper use of a piece of equipment. Finally, the *in situ* data-collection measurement device may be calibrated incorrectly. This can result in serious *measurement-device calibration error*.

Intrusive *in situ* data collection, coupled with human method-produced error and measurement-device miscalibration, all contribute to *in situ* data-collection error. Therefore, it is a misnomer to refer to *in situ* data as ground truth data. Instead, we should simply refer

to it as *in situ* **ground reference data**, acknowledging that it contains error.



## Remote Sensing Data Collection

Fortunately, it is possible to collect information about an object or geographic area from a distant vantage point using **remote sensing** instruments (Figure 1-2). Remote sensing data collection was originally performed using cameras mounted in suborbital aircraft. **Photogrammetry** was defined in the early editions of the *Manual of Photogrammetry* as:

the art or science of obtaining reliable measurement by means of photography (American Society of Photogrammetry, 1952; 1966).

**Photographic interpretation** is defined as:

the act of examining photographic images for the purpose of identifying objects and judging their significance (Colwell, 1960).

**Remote sensing** was formally defined by the American Society for Photogrammetry and Remote Sensing (ASPRS) as:

the measurement or acquisition of information of some property of an object or phenomenon, by a recording device that is not in physical or intimate contact with the object or phenomenon under study (Colwell, 1983).

In 1988, ASPRS adopted a **combined definition of photogrammetry and remote sensing**:

Photogrammetry and remote sensing are the art, science, and technology of obtaining reliable information about physical objects and the environment, through the process of recording, measuring and interpreting imagery and digital representations of energy patterns derived from non-contact sensor systems (Colwell, 1997).

But where did the term *remote sensing* come from? The actual coining of the term goes back to an unpublished paper in the early 1960s by the staff of the Office of Naval Research (ONR) Geography Branch (Pruitt, 1979; Fussell et al., 1986). Evelyn L. Pruitt was the author of the paper. She was assisted by staff member Walter H. Bailey. Aerial photo interpretation had become very important in World War II. The space age was just getting under way with the 1957 launch of *Sputnik* (U.S.S.R.), the 1958 launch of *Explorer 1*

(U.S.), and the collection of photography from the then secret CORONA program initiated in 1960 (Table 1-1, page 11). In addition, the Geography Branch of ONR was expanding its research using instruments other than cameras (e.g., scanners, radiometers) and into regions of the electromagnetic spectrum beyond the visible and near-infrared regions (e.g., thermal infrared, microwave). Thus, in the late 1950s it had become apparent that the prefix “photo” was being stretched too far in view of the fact that the root word, *photography*, literally means “to write with [visible] light” (Colwell, 1997). Evelyn Pruitt (1979) wrote:

The whole field was in flux and it was difficult for the Geography Program to know which way to move. It was finally decided in 1960 to take the problem to the Advisory Committee. Walter H. Bailey and I pondered a long time on how to present the situation and on what to call the broader field that we felt should be encompassed in a program to replace the aerial photointerpretation project. The term ‘photograph’ was too limited because it did not cover the regions in the electromagnetic spectrum beyond the ‘visible’ range, and it was in these nonvisible frequencies that the future of interpretation seemed to lie. ‘Aerial’ was also too limited in view of the potential for seeing the Earth from space.

The term **remote sensing** was promoted in a series of symposia sponsored by ONR at the Willow Run Laboratories of the University of Michigan in conjunction with the National Research Council throughout the 1960s and early 1970s, and has been in use ever since (Estes and Jensen, 1998).

Remote sensing instruments such as cameras, multi-spectral and hyperspectral sensors, thermal-infrared detectors, Radio Detection and Ranging (RADAR) sensors, and Light Detection and Ranging (LiDAR) instruments are flown onboard satellites or suborbital aircraft such as airplanes, helicopters, and Unmanned Aerial Vehicles (UAVs) (Figure 1-2). Sound Navigation and Ranging (SONAR) sensors are placed onboard ships and submarines to map the bathymetry of sub-surface terrain.

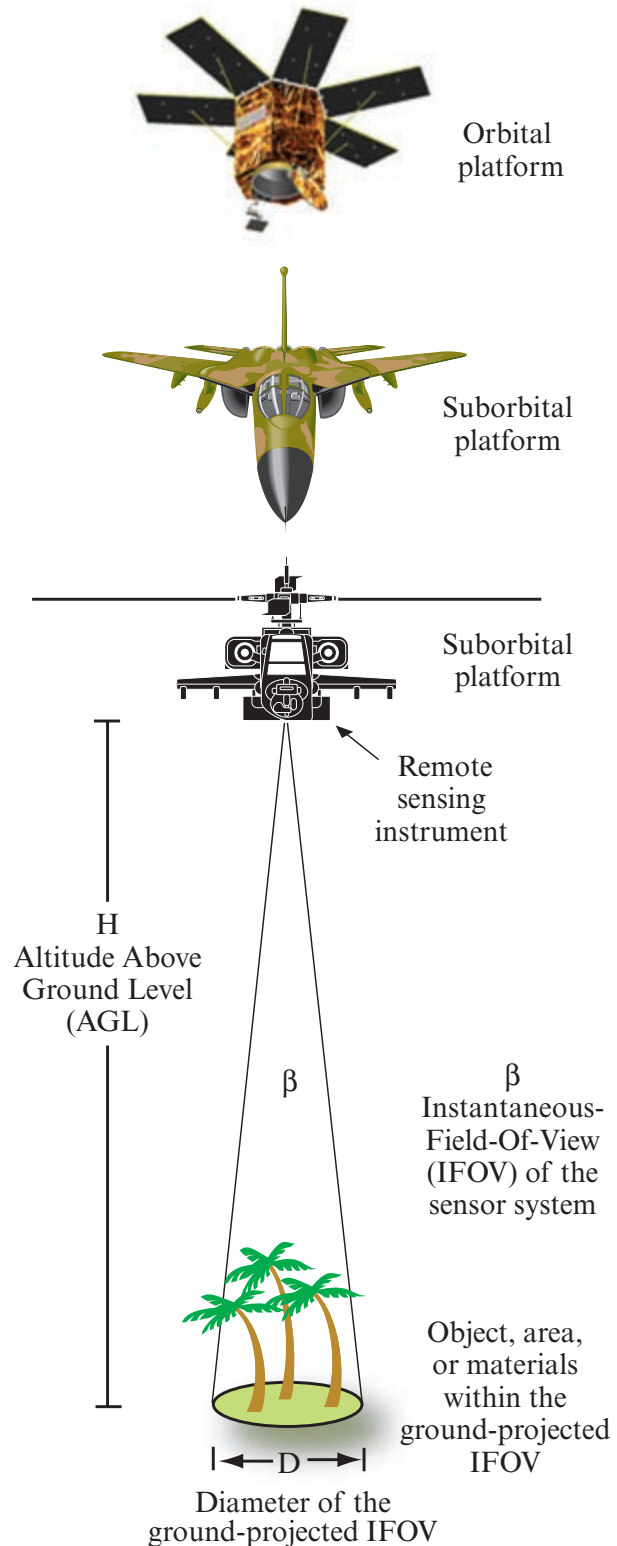
## Observations About Remote Sensing

The following brief discussion focuses on various terms found in the formal definitions of remote sensing.

### Remote Sensing: Art and/or Science?

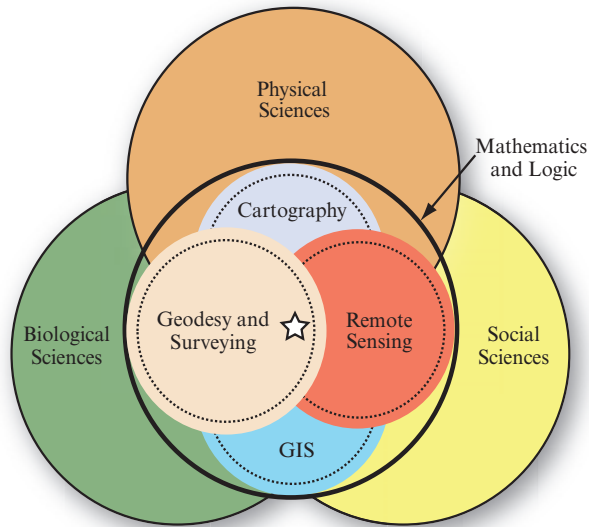
**Science:** A **science** is a broad field of human knowledge concerned with facts held together by principles (rules). Scientists discover and test facts and principles

## Remote Sensing Measurement

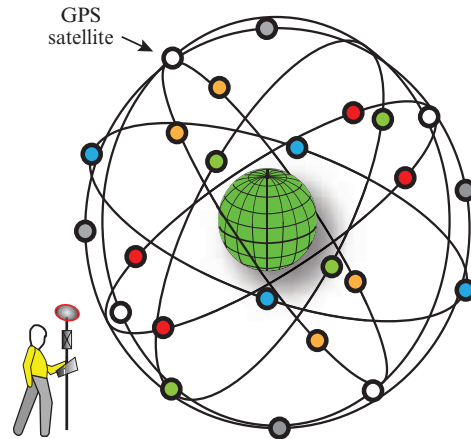


**FIGURE 1-2** A remote sensing instrument collects information about an object or phenomenon within the IFOV of the sensor system without being in direct physical contact with it. The remote sensing instrument may be located just a few meters above the ground or onboard an aircraft or satellite platform.

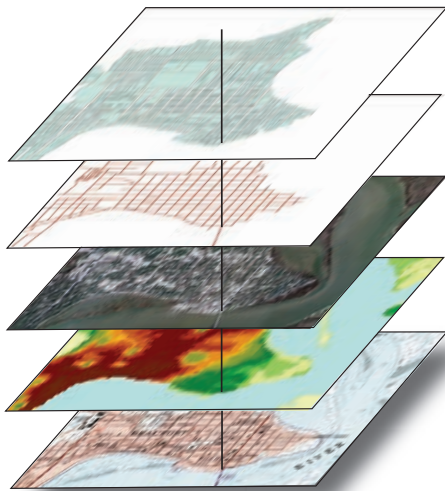
## Allied Mapping Sciences



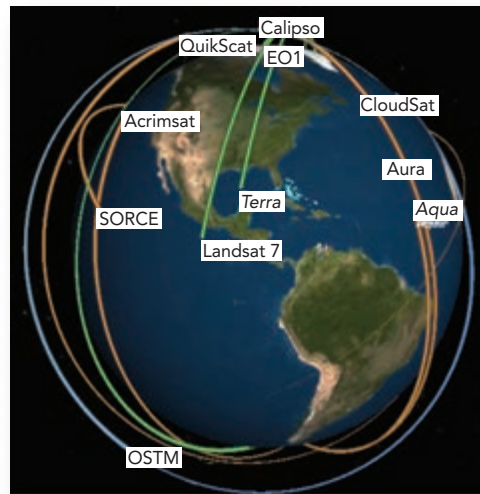
a. Interaction of the geographic information sciences (GISciences) as they relate to the other sciences.



b. Geodesy and surveying.



c. Cartography and Geographic Information Systems (GIS).



d. Remote sensing.

**FIGURE 1-3** a) Interaction model depicting the relationship of the geographic information sciences (geodesy, surveying, cartography, GIS, and remote sensing) as they relate to mathematics and logic and the physical, biological, and social sciences. b) Geodesy and surveying provide geodetic control and detailed local geospatial information. c) Cartographers map geospatial information and Geographic Information Systems are used to model geospatial information. d) Satellite and suborbital remote sensing systems provide much of the useful geospatial information used by cartographers, GIS practitioners, and other scientists.

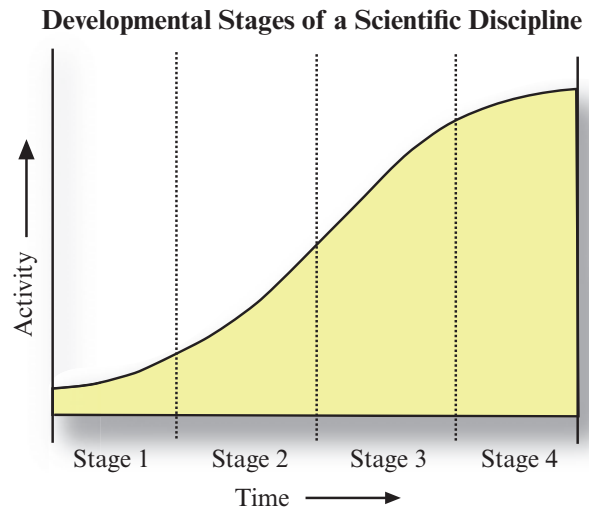
by the scientific method, an orderly system of solving problems. Scientists generally feel that any subject that humans can study by using the scientific method and other special rules of thinking may be called a science. The sciences include 1) *mathematics and logic*, 2) *physical sciences*, such as physics and chemistry, 3) *biological sciences*, such as botany and zoology, and 4) *social sciences*, such as geography, sociology, and anthropology (Figure 1-3a). Interestingly, some persons do not consider mathematics and logic to be sciences. But the

fields of knowledge associated with mathematics and logic are such valuable *tools* for science that we cannot ignore them. The human race's earliest questions were concerned with "how many" and "what belonged together." They struggled to count, to classify, to think systematically, and to describe exactly. In many respects, the state of development of a science is indicated by the use it makes of mathematics. A science seems to begin with simple mathematics to measure, then works toward more complex mathematics to explain.

Remote sensing is a tool or technique similar to mathematics. Using sophisticated sensors to measure the amount of electromagnetic energy exiting an object or geographic area from a distance and then extracting valuable information from the data using mathematically and statistically based algorithms is a scientific activity. Remote sensing functions in harmony with several other geographic information sciences (often referred to as the **GISciences**), including geodesy, surveying, cartography, and Geographic Information Systems (GIS) (Figure 1-3b-d). The model shown in Figure 1-3a suggests there is interaction between the mapping sciences, where no subdiscipline dominates and all are recognized as having unique yet overlapping areas of knowledge and intellectual activity as they are used in physical, biological, and social science research.

Significant advances will continue to be made in all of these technologies. In addition, the technologies will become more integrated with one another. For example, GIS network analysis applications have benefited tremendously from more accurate road network centerline data obtained using GPS units mounted on specially prepared cars or derived from high spatial resolution remote sensor data. Entire industries are now dependent on high spatial resolution satellite and airborne remote sensor data as geographic background imagery for their search engines (e.g., *Google Earth*, *Google Maps*, *Bing Maps*). Remote sensing data collection has benefited from advancements in GPS measurements that are used to improve the geometric accuracy of images and image-derived products that are used so heavily in GIS applications. Terrestrial surveying has been revolutionized by improvements in GPS technology, where measurements as accurate as  $\pm 1$  to 3 cm in  $x$ ,  $y$ , and  $z$  are now possible.

The theory of science suggests that scientific disciplines go through four classic developmental stages. Wolter (1975) suggested that the growth of a scientific discipline, such as remote sensing, that has its own techniques, methodologies, and intellectual orientation seems to follow the sigmoid or logistic curve illustrated in Figure 1-4. The growth stages of a scientific field are: Stage 1—a preliminary growth period with small increments of literature; Stage 2—a period of exponential growth when the number of publications doubles at regular intervals; Stage 3—a period when the rate of growth begins to decline but annual increments remain constant; and Stage 4—a final period when the rate of growth approaches zero. The characteristics of a scholarly field during each of the stages may be briefly described as follows: Stage 1—little or no social organization; Stage 2—groups of collaborators and existence of invisible colleges, often in the form of ad hoc institutes, research units, etc.; Stage 3—increasing spe-



**FIGURE 1-4** Developmental stages of a scientific discipline (Source: Wolter, 1975; Jensen and Dahlberg, 1983).

cialization and increasing controversy; and Stage 4—decline in membership in both collaborators and invisible colleges.

Using this logic, it appears that remote sensing is in Stage 2, experiencing exponential growth since the mid-1960s with the number of publications doubling at regular intervals. Empirical evidence consists of: 1) the organization of many specialized institutes and centers of excellence associated with remote sensing, 2) the organization of numerous professional societies devoted to remote sensing research, 3) the publication of numerous new scholarly remote sensing journals, 4) significant technological advancement such as improved sensor systems and methods of image analysis, and 5) robust self-examination. We may be approaching Stage 3 with increasing specialization and theoretical controversy. However, the rate of growth of remote sensing has not begun to decline. In fact, there has been a tremendous surge in the numbers of persons specializing in remote sensing and commercial firms using remote sensing during the last three decades. Significant improvements in the spatial resolution of satellite remote sensing (e.g., high resolution  $1 \times 1$  m panchromatic data) has brought even more social science GIS practitioners into the fold. Hundreds of new peer-reviewed remote sensing research articles are published every month.

**Art:** The process of visual photo or image interpretation brings to bear not only scientific knowledge, but all of the background that a person has obtained through his or her lifetime. Such learning cannot be measured, programmed, or completely understood. The synergism of combining scientific knowledge with the real-world analyst experience allows the interpreter to develop heuristic rules of thumb to extract valuable



information from the imagery. It is a fact that some image analysts are superior to other image analysts because they: 1) understand the scientific principles better, 2) are more widely traveled and have seen many landscape objects and geographic areas, and/or 3) can synthesize scientific principles and real-world knowledge to reach logical and correct conclusions. Thus, remote sensing image interpretation is both an art and a science.

### Information About an Object or Area

Sensors can obtain very specific information about an object (e.g., the diameter of an oak tree crown) or the geographic extent of a phenomenon (e.g., the polygonal boundary of an entire oak forest). The electromagnetic energy emitted or reflected from an object or geographic area is used as a surrogate for the actual property under investigation. The electromagnetic energy measurements are typically turned into information using visual and/or digital image processing techniques.

### The Instrument (Sensor)

Remote sensing is performed using an instrument, often referred to as a sensor. The majority of remote sensing instruments record electromagnetic radiation (EMR) that travels at a velocity of  $3 \times 10^8 \text{ m s}^{-1}$  from the source, directly through the vacuum of space or indirectly by reflection or reradiation to the sensor. The EMR represents a very efficient high-speed communications link between the sensor and the remote phenomenon. In fact, we know of nothing that travels faster than the speed of light. Changes in the amount and properties of the EMR become, upon detection by the sensor, a valuable source of data for interpreting important properties of the phenomenon (e.g., temperature, color). Other types of force fields may be used in place of EMR, such as acoustic (sonar) waves. However, the majority of remotely sensed data collected for Earth resource applications is the result of sensors that record electromagnetic energy.

### Distance: How Far Is Remote?

Remote sensing occurs at a distance from the object or area of interest. Interestingly, there is no clear distinction about how great this distance should be. The intervening distance could be 1 cm, 1 m, 100 m, or more than 1 million m from the object or area of interest. Much of astronomy is based on remote sensing. In fact, many of the most innovative remote sensing systems and visual and digital image processing methods were originally developed for remote sensing extraterrestrial landscapes such as the moon, Mars, Saturn, Jupiter, etc. (especially by NASA's Jet Propulsion Laboratory personnel). This text, however, is concerned primarily with remote sensing of the terrestrial

Earth, using sensors that are placed on suborbital air-breathing aircraft or orbital satellite platforms placed in the vacuum of space.

Remote sensing and digital image processing techniques can also be used to analyze inner space. For example, an electron microscope can be used to obtain photographs of extremely small objects on the skin, in the eye, etc. An x-ray instrument is a remote sensing system where the skin and muscle are like the atmosphere that must be penetrated, and the interior bone or other matter is the object of interest.

## Remote Sensing Advantages and Limitations

Remote sensing has several unique advantages as well as some limitations.

### Advantages

Remote sensing is unobtrusive if the sensor is passively recording the electromagnetic energy reflected from or emitted by the phenomenon of interest. This is a very important consideration, as passive remote sensing does not disturb the object or area of interest.

Remote sensing devices are programmed to collect data systematically, such as within a single  $9 \times 9$  in. frame of vertical aerial photography or a matrix (raster) of Landsat 5 Thematic Mapper data. This systematic data collection can remove the sampling bias introduced in some *in situ* investigations.

Remote sensing science is also different from cartography or GIS because these sciences rely on data obtained or synthesized by others. Remote sensing science can provide fundamental, *new* scientific data or information. Under controlled conditions, remote sensing can provide fundamental biophysical information, including: *x*, *y* location, *z* elevation or depth, biomass, temperature, moisture content, etc. In this sense, remote sensing science is much like surveying, providing fundamental information that other sciences can use when conducting scientific investigations. However, unlike much of surveying, the remotely sensed data can be obtained systematically over very large geographic areas rather than just single-point observations. In fact, remote sensing-derived information is now critical to the successful modeling of numerous natural (e.g., water-supply estimation; eutrophication studies; nonpoint source pollution) and cultural (e.g., land-use conversion at the urban fringe; water-demand estimation; population estimation; food security) processes (NRC, 2007a; 2009). A good example is the digital elevation model that is so important in many spatially-distributed GIS models. Digital elevation models are now produced mainly from light detection and ranging

(LiDAR) (e.g., Renslow, 2012), stereoscopic aerial photography, RADAR measurements, or Interferometric Synthetic Aperture Radar (IFSAR) imagery.

### Limitations

Remote sensing science has limitations. Perhaps the greatest limitation is that it is often oversold. Remote sensing is not a panacea that will provide all the information needed to conduct physical, biological, or social science research. It simply provides some spatial, spectral, and temporal information of value in a manner that is hopefully efficient and economical.

Human beings select the most appropriate remote sensing system to collect the data, specify the various resolution(s) of the remote sensor data, calibrate the sensor, select the satellite or suborbital platform that will carry the sensor, determine when the data will be collected, and specify how the data are processed. Therefore, human method-produced error may be introduced as the remote sensing instrument and mission parameters are specified.

Powerful active remote sensor systems that emit their own electromagnetic radiation (e.g., LiDAR, RADAR, SONAR) can be intrusive and affect the phenomenon being investigated. Additional research is required to determine how intrusive these active sensors can be.

Remote sensing instruments may become uncalibrated, resulting in uncalibrated remote sensor data. Finally, remote sensor data may be relatively expensive to collect and analyze. Hopefully, the information extracted from the remote sensor data justifies the expense. The greatest expense in a typical remote sensing investigation is for well-trained image analysts, not remote sensor data.



## The Remote Sensing Process

Scientists have been developing procedures for collecting and analyzing remotely sensed data for more than 150 years. The first photograph from an aerial platform (a tethered balloon) was obtained in 1858 by the Frenchman Gaspard Felix Tournachon (who called himself Nadar). Significant strides in aerial photography and other remote sensing data collection took place during World Wars I and II, the Korean Conflict, the Cuban Missile Crisis, the Vietnam War, the Gulf War, the war in Bosnia, and the war on terrorism. Basically, military contracts to commercial companies resulted in the development of sophisticated electro-optical multispectral remote sensing systems and thermal infrared and microwave (radar) sensor systems

whose characteristics are summarized in Chapter 2. While the majority of the remote sensing systems may have been initially developed for military reconnaissance applications, the systems are now also heavily used for monitoring the Earth's natural resources.

The remote sensing data-collection and analysis procedures used for Earth resource applications are often implemented in a systematic fashion that can be termed the **remote sensing process**. The procedures in the process are summarized here and in Figure 1-5:

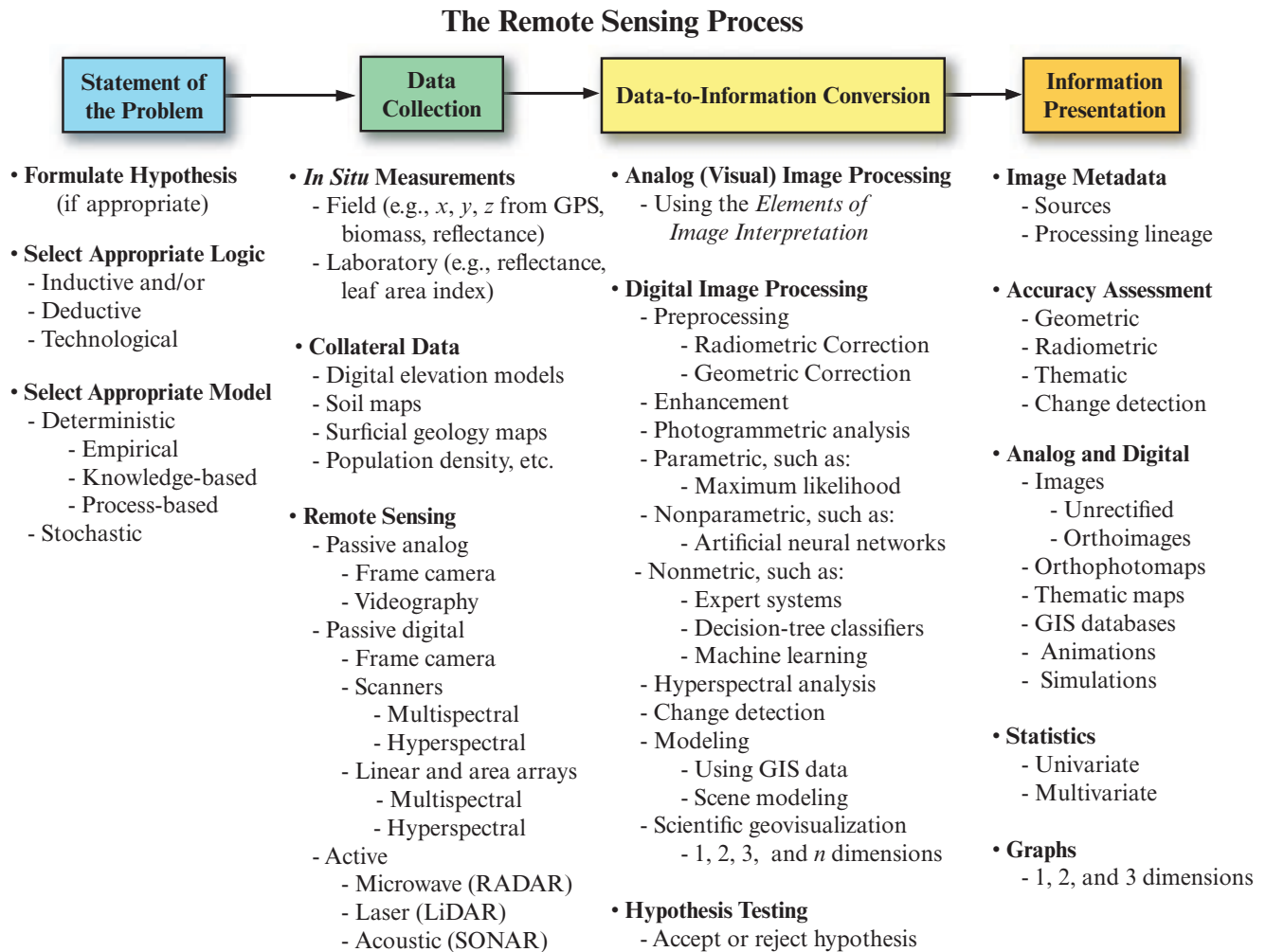
- The hypothesis to be tested is defined using a specific type of logic (e.g., inductive, deductive) and an appropriate processing model (e.g., deterministic, stochastic).
- *In situ* and collateral information necessary to calibrate the remote sensor data and/or judge its geometric, radiometric, and thematic characteristics are collected.
- Remote sensor data are collected passively (e.g., digital cameras) or actively (e.g., RADAR, LiDAR) using analog or digital remote sensing instruments, ideally at the same time as the *in situ* data.
- *In situ* and remotely sensed data are processed using a variety of techniques, including: a) analog image processing, b) digital image processing, c) modeling, and d) *n*-dimensional visualization.
- Metadata, processing lineage, and the accuracy of the information are provided and the results communicated using images, graphs, statistical tables, GIS databases, Spatial Decision Support Systems (SDSS), etc.

It is useful to review the characteristics of these remote sensing process procedures.

## Statement of the Problem

Sometimes the general public and even children look at aerial photography or other remote sensor data and extract useful information. They do this without a formal hypothesis in mind. Often, however, they interpret the imagery incorrectly because they do not understand the nature of the remote sensing system used to collect the data or appreciate the vertical or oblique perspective of the terrain recorded in the imagery.

Scientists who use remote sensing, on the other hand, are usually trained in the scientific method—a way of thinking about problems and solving them. They use a formal plan that typically has at least five elements: 1) stating the problem, 2) forming the research hypothesis (i.e., a possible explanation), 3) observing and experimenting, 4) interpreting data, and 5) drawing conclusions. It is not necessary to follow this formal plan exactly.



**FIGURE 1–5** Scientists generally use the remote sensing process to extract information from remotely-sensed images.

The scientific method is normally used in conjunction with environmental models that are based on two primary types of logic:

- deductive logic, and
- inductive logic.

Models based on deductive and/or inductive logic can be further subdivided according to whether they are processed deterministically or stochastically. Some scientists extract new thematic information directly from remotely sensed imagery without ever explicitly using inductive or deductive logic. They are just interested in extracting information from the imagery using appropriate methods and technology. This technological approach is not as rigorous, but it is common in applied remote sensing. The approach can also generate new knowledge.

Remote sensing is used in both scientific (inductive and deductive) and technological approaches to obtain knowledge. There is discussion as to how the different

types of logic used in the remote sensing process yield new scientific knowledge (e.g., Fussell et al., 1986; Curran, 1987; Fisher and Lindenber, 1989; Dobson, 1993; Skidmore, 2002; Wulder and Coops, 2014).

## Identification of *In situ* and Remote Sensing Data Requirements

If a hypothesis is formulated using inductive and/or deductive logic, a list of variables or observations are identified that will be used during the investigation. *In situ* observation and/or remote sensing may be used to collect information on the most important variables.

Scientists using remote sensing technology should be well trained in field and laboratory data-collection procedures. For example, if a scientist wants to map the surface temperature of a lake, it is usually necessary to collect accurate empirical *in situ* lake-temperature measurements at the same time the remote sensor data are collected. The *in situ* data may be used to: 1) calibrate